



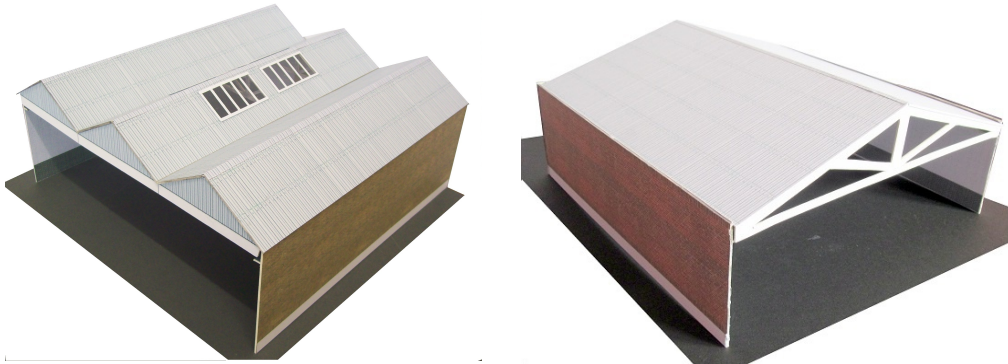
Garage extension kits. JULY 2016

4mm scale/OO gauge

www.kingswaymodels.com

Bus garages are big places! Consequently most of the models in the Kingsway range are half relief or at least represent only part of the original building. The models may be extended by using some of the kits in the garage extension range.

The GGX/GGZ kits



These provide a system of units each ten inches square (although they could of course be cut down in size).

They are available with either a triple gable roof (left GGX) or a single gable roof (right GGZ), and can have yellow brick or red brick walls. The roofs are removable (the walls should be fixed to the baseboard), and may be turned through 90°.

The kits provide three walls which may be fitted with openings if desired. Naturally two or more units can be joined together.

Note that the skylights shown are not included although simple instructions for making some using clear plastic sheet are.

The interior walls are decorated with a black brick finish at the base and white brick above.

GGX - triple gable , yellow brick

GGXr - triple gable , red brick

GGZ - single gable , yellow brick

GGZr - single gable , red brick

Price each kit: B

The GGX kits do not necessarily fit *exactly* with all of the bus garages in the Kingsway Models range, but are designed to be easy to adapt as required.

Two front walls are available for use with the GGX/GGZ kits. The MOD (left) represents a modern style depot and BA (right) is a rather more traditional style. The doors of both types can be posed open or closed.



Each of the front walls comes with a GGX or GGZ unit. As standard:

the **MOD plus GGX** triple gable roof, yellow brick

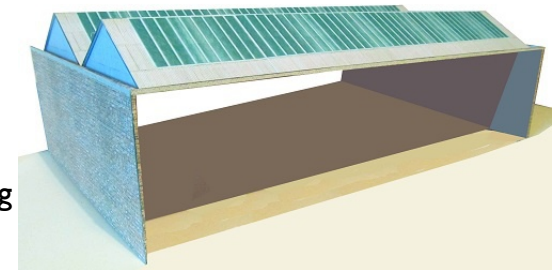
the **BA plus GGZr** single gable roof, red brick

Price: C for either combination

For any other combinations please email me through the website **CONTACT PAGE.**

HDX Harrow Weald extension kit

The HDX extension is designed to extend the HD Harrow Weald bus garage model, matching it completely. It covers an area approximately 15" x 8" comprising two side walls.



It may be useful with other garages as well.

HDX

Price B

Prices: B-£14 C-£16 P & P incl to UK

Available from:

J. Howe, 15 King's Close, Buxton, Derbyshire. SK17 7NT

Cheques payable to J. Howe

