

Downing Street - Kingsway Christmas Download 2017

A 1/76 scale model of the street frontage of the Prime Minister's official residence.

Download and print at 100%. The download has four sheets including these instructions.

Fasten two sheets to 1.25mm thick mounting card (important to achieve a 'strong and stable' foundation) and one to 160gsm card. Use Bostick All Purpose adhesive to glue the parts together.

The model is an approximation of the frontages of numbers 10 and 11, Downing Street. Close observers will note that in this age of austerity certain cutbacks have been made; notably the railings and ornate light fittings. (Speculation that these have been removed by Boris cannot be confirmed)

1. Cut out the front wall from sheet 1. Carefully cut out the window spaces. Use a soft 3B pencil to darken the edges of the window openings, and also the top and side edges of the front wall.

2. Cut out the various printed windows from sheet 3 and glue behind the openings.

3. Cut out the two side walls from sheet 2 and glue behind each end of the front wall.

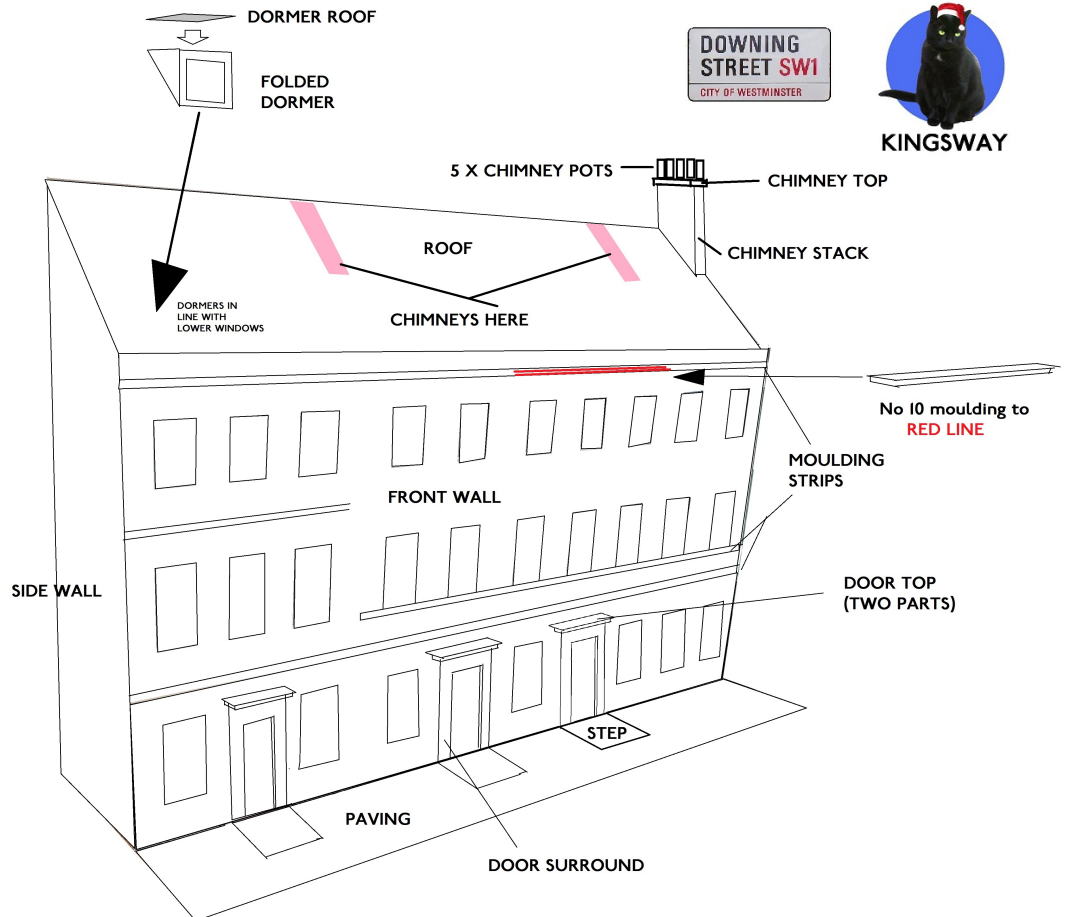
4. Cut out the roof and glue on top of the side walls and against the rear of the front wall.

5. Cut out the paving and glue against the front wall. Add the three steps where indicated. Cut out the door surrounds and glue in place. Note that no.10 is at the right hand end; no. 11 at the left; and an intermediate door between. Add the door tops (two parts each with grey uppermost)

6. If desired cut out the moulding strips to glue over those printed on the front wall. Add window sills where there are no mouldings.

7. Cut out the three chimney stacks and fold to shape. Glue the tab. Add the chimney stack tops. Position the stacks as shown in pink on the diagram. Cut out the chimney pot strips and roll up tightly into cylinders. Darken the top edges and glue five to each stack.

8. Cut out and fold the dormer windows, adding a flat roof to each. Glue these to the roof, directly lined up above the second floor windows.



The model is complete. I added some of Ratio's plastic GWR spear fencing to represent the railings.

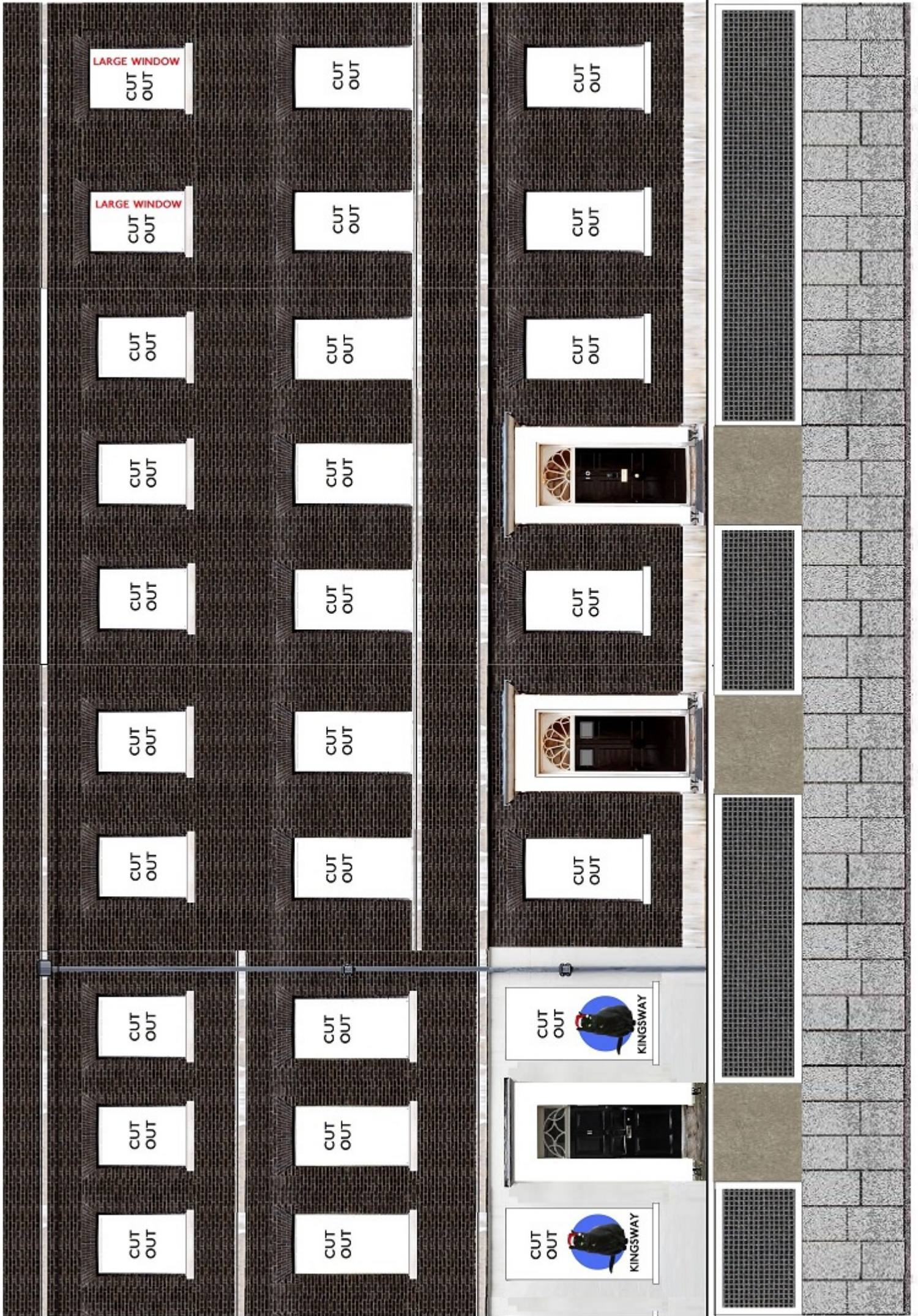
Find previous Christmas downloads at <http://www.kingswaymodels.com/page27.htm>



KINGSWAY

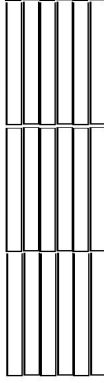
Merry Christmas from Kingsway Models.

Find a large range of distinctive card kits at www.kingswaymodels.com





MOULDINGS



WINDOW SILLS

No 10 mouldings

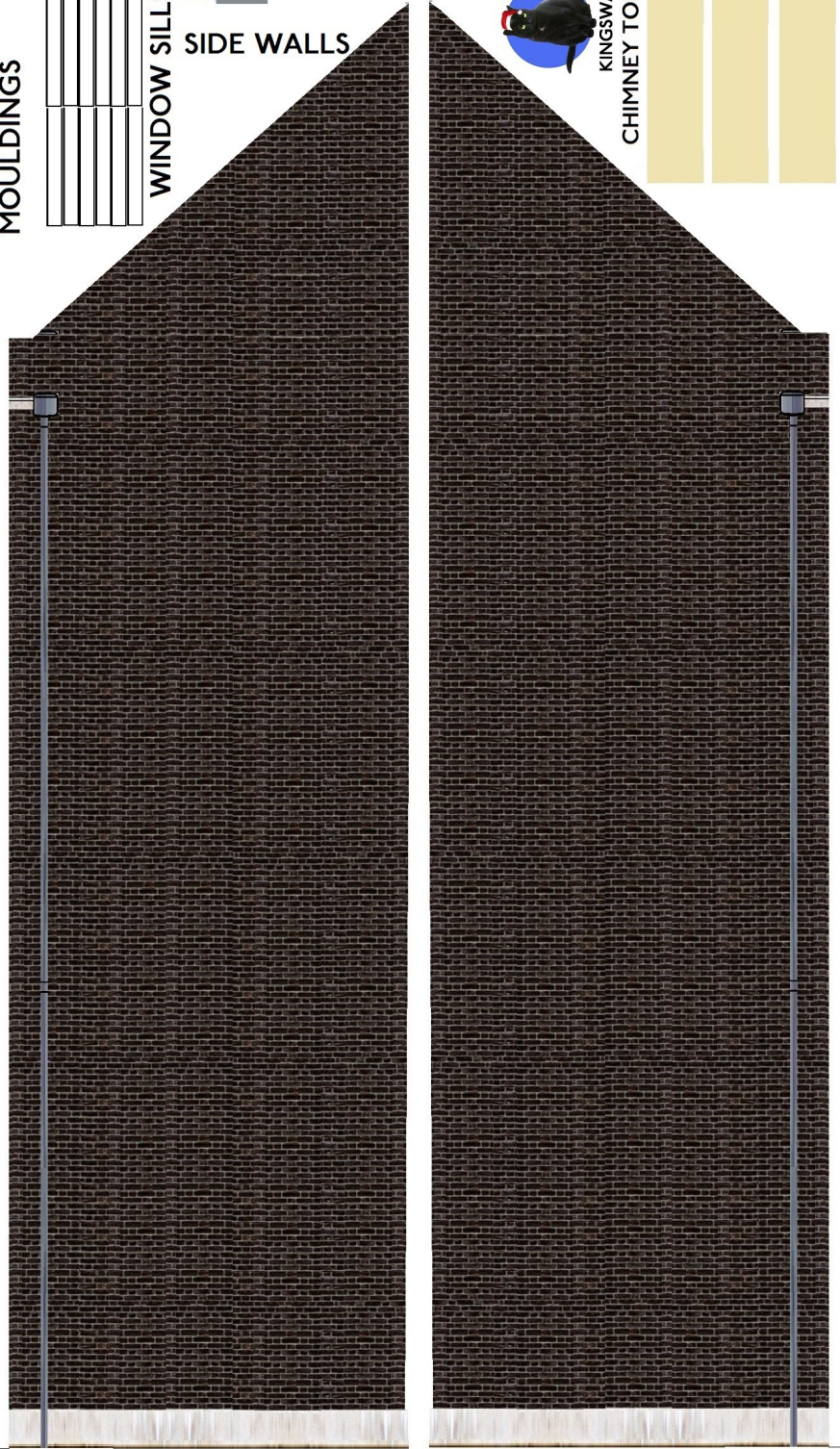
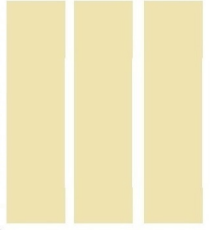
SHEET 2 thick card



DOORWAYS
DOOR STEPS



CHIMNEY TOPS



DORMER ROOFS

DORMER WINDOWS

SECOND FLOOR WINDOWS S

FIRST FLOOR WINDOWS F

GROUND FLOOR WINDOWS G

CHIMNEY POTS

CHIMNEY STACKS

