

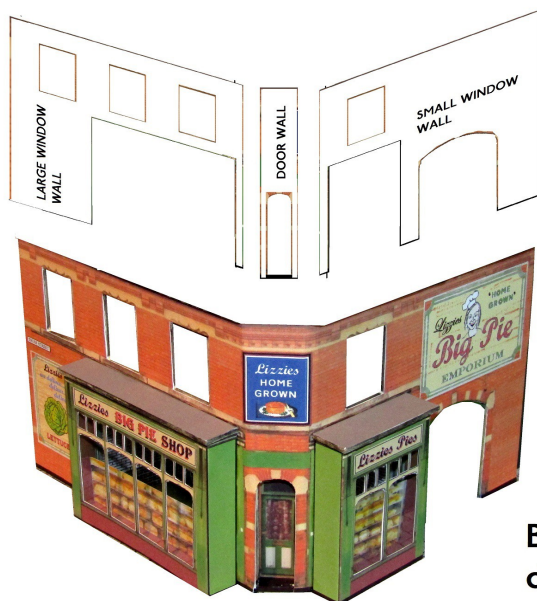
Christmas 2022 free download - Lizzies Big Pie shop

The download has five sheets including these instructions.

Two sheets of parts should be fixed to **stout card** (I used mounting board approximately 1.4 mm thick) , and **two** sheets marked 'THIN' should be fixed to **thin 160gsm card** (about the same thickness as a Christmas card)

Use a knife and steel rule on a cutting mat to cut the parts out, and Bostik All Purpose adhesive to glue the parts together.

Find previous Christmas downloads on the Kingsway website at <https://www.kingswaymodels.co.uk/free-downloads>



GENERAL INSTRUCTIONS



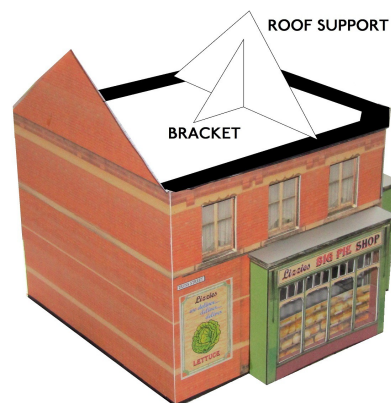
Cut out the thick wall pieces.
Darken the cut edges.

Cut out and fold the thin main wall

Glue the thick pieces behind carefully
aligning the windows.

Build up the shop window and entrance
door units, and glue in place.

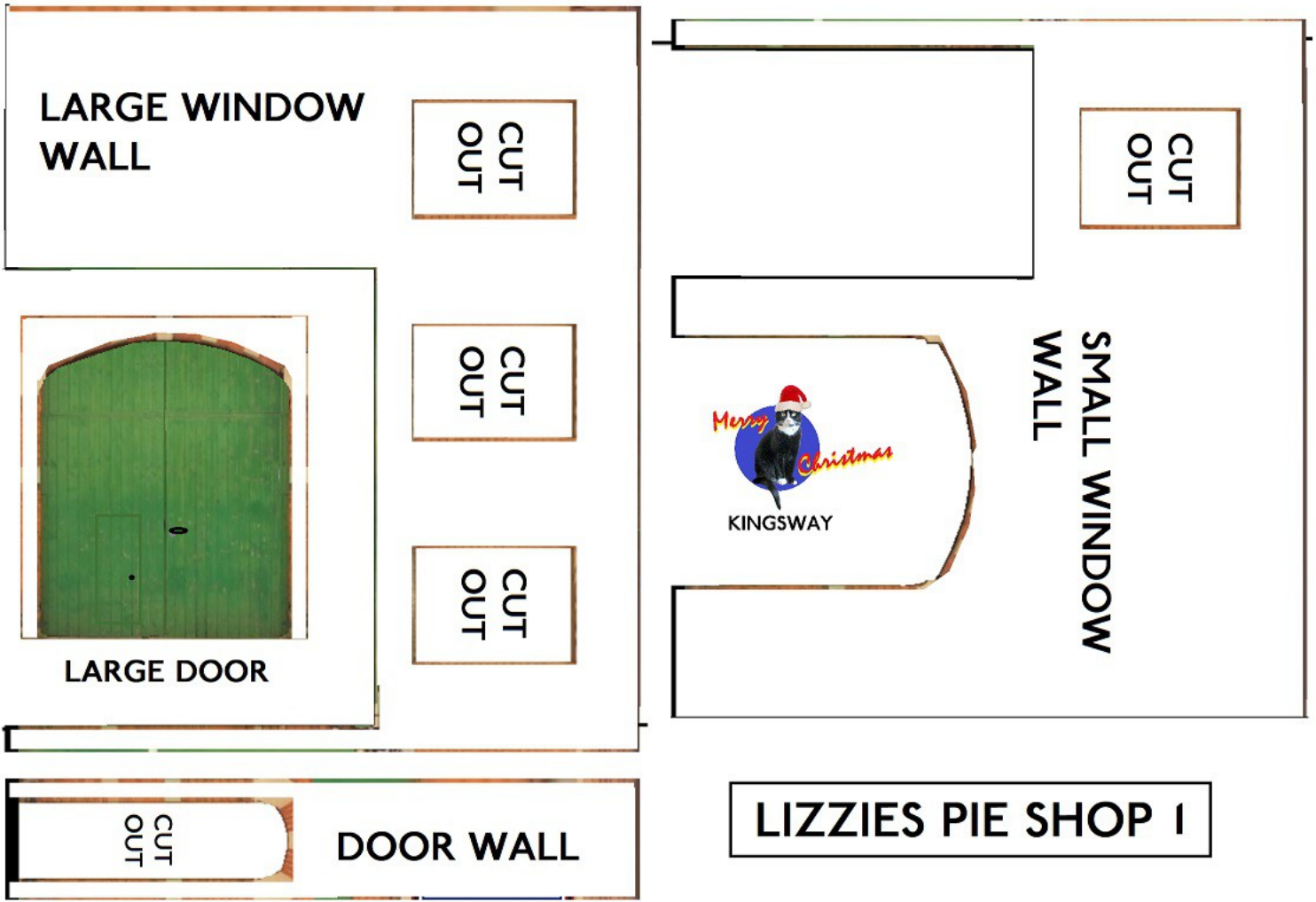
1. Cut out the three wall sections from sheet 1. Carefully remove the window and door openings.
2. Cut out the main wall section from sheet Thin 1. Again remove the window & door openings. Glue the thick wall pieces to the rear, carefully aligning the windows.
3. Cut out the upper windows from Thin 2, and glue in place behind the wall.
4. Cut out the two shop windows. If you are happy with the printed window displays then these may simply be folded and glued to the main wall with window tops from sheet 1 added above, **OR** - For a better effect, the individual window panes may be cut out, and a sheet of clear plastic glued inside. In this case the separate window displays can be folded and glued inside, and the window interior sides glued in place. An interior wall is also provided.
5. Cut out and fold the doorway from Thin 1, and glue in place behind the opening.
6. Cut out the rear wall from sheet 2. Glue this to the rear of the LH edge of the main wall, at right angles.
7. Cut out the flat roof from sheet 1. Colour the edges with black felt pen. Glue this in place on top of the folded main wall, *overhanging the edge by about 2mm.*, and against the inside of the rear wall
8. Cut out the rear wall skin from Thin 2. Glue this to the rear wall. Align the gable accurately, and trim edges when dry.
9. Cut out the roof support and bracket and add to the flat roof.
10. Cut out the main roof and corner roof from Thin 2. Fold as indicated. Glue the two pieces together using the tabs. The roof sits over the rear wall and roof support. And glues to the black area of the flat roof leaving a narrow black gutter exposed.
11. Cut out the tile capping strips. Fold lengthwise and glue to the roof ridges, cutting to size as required.
12. Cut out the paving. Colour the kerb edge with 3B soft pencil. Similar paving is available in the Kingsway PAV kit.
13. Cut out and fold up the chimney stack. Use the tab to glue. Add the chimney stiffener pieces inside, and glue the top in place.
14. Cut out and roll up four chimney pots - colour the inside black. Glue to the top of the chimney stack.



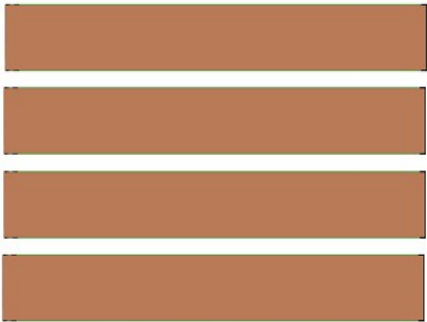
Merry Christmas from Kingsway Models.

Find a large range of distinctive card building kits for sale at www.kingswaymodels.co.uk

Designed by John Howe November 2022



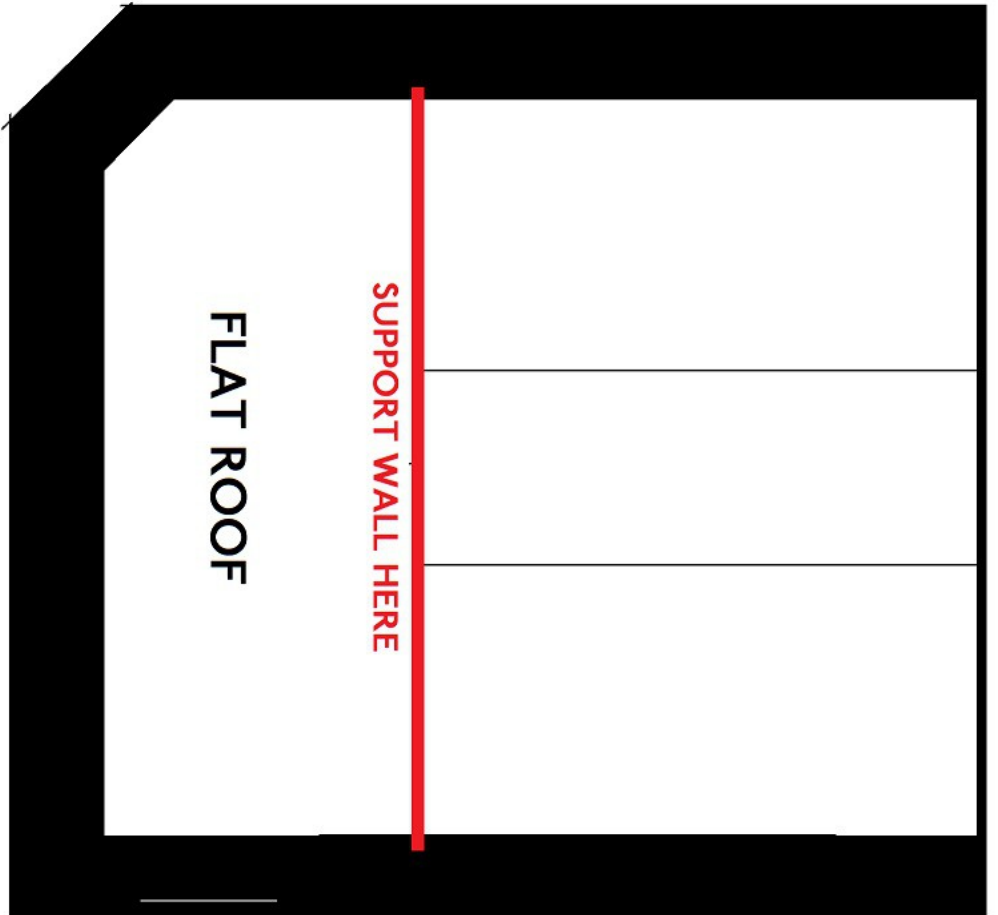
www.kingswaymodels.co.uk

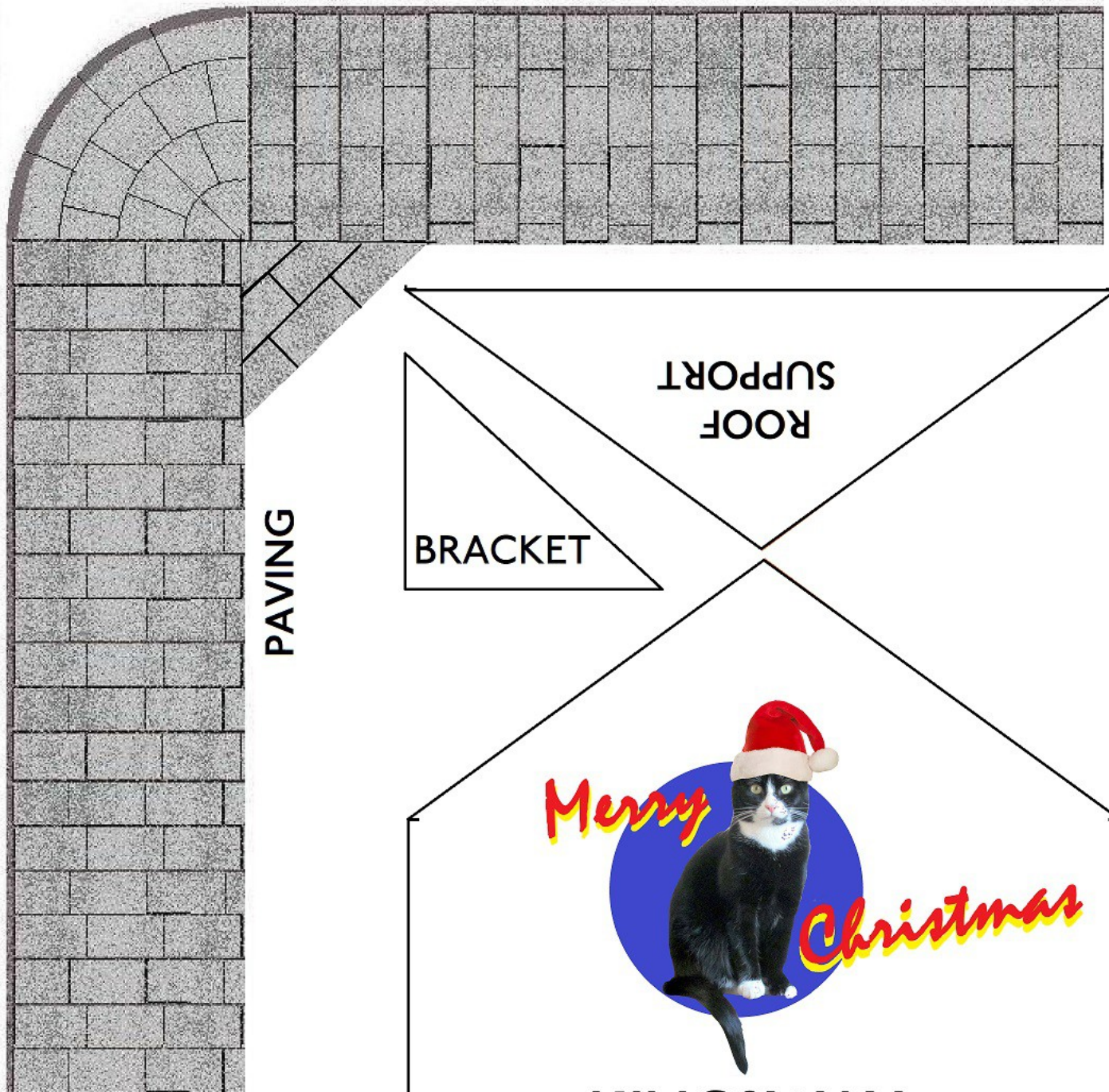


WINDOW INTERIOR SIDES



WINDOW TOPS





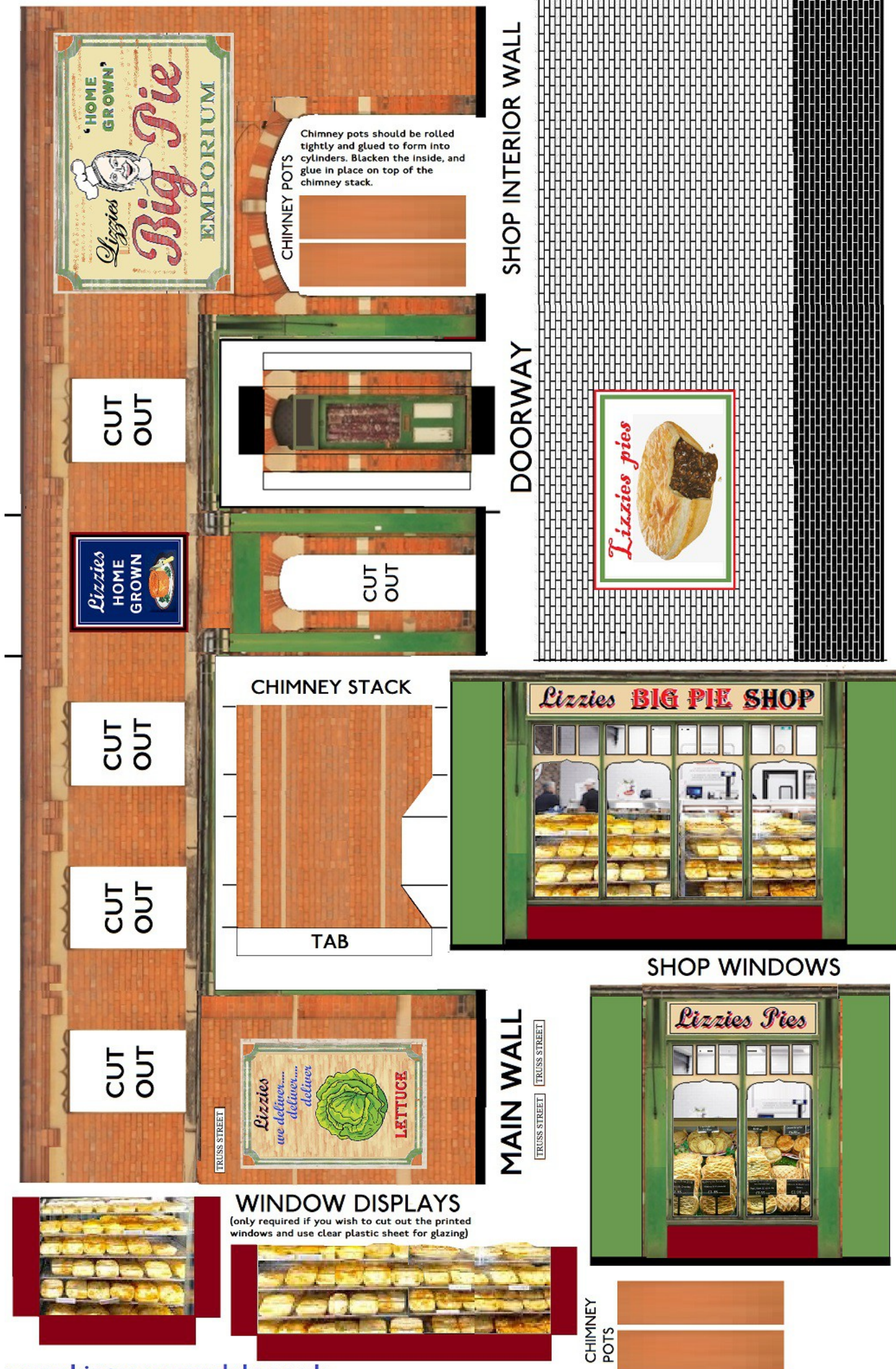
CHIMNEY
STIFFENER

CHIMNEY
STIFFENER

CHIMNEY
TOP

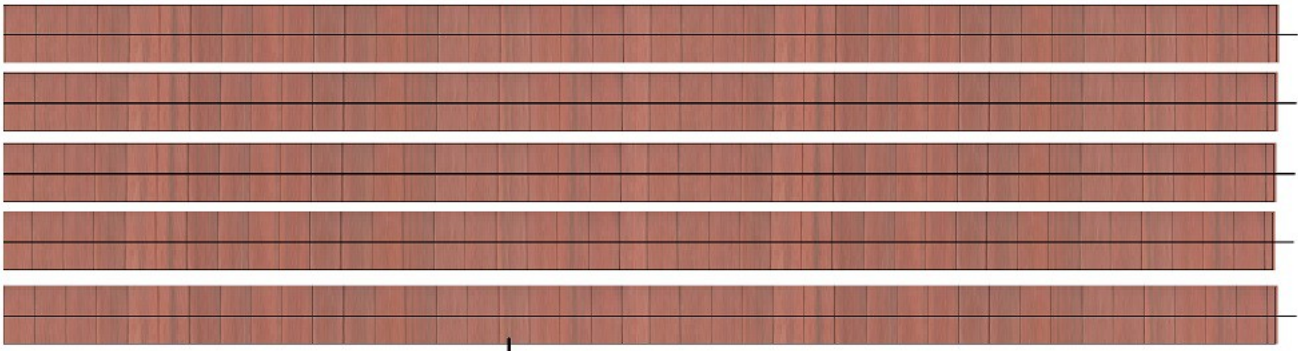
www.kingswaymodels.co.uk

LIZZIES PIE SHOP 2

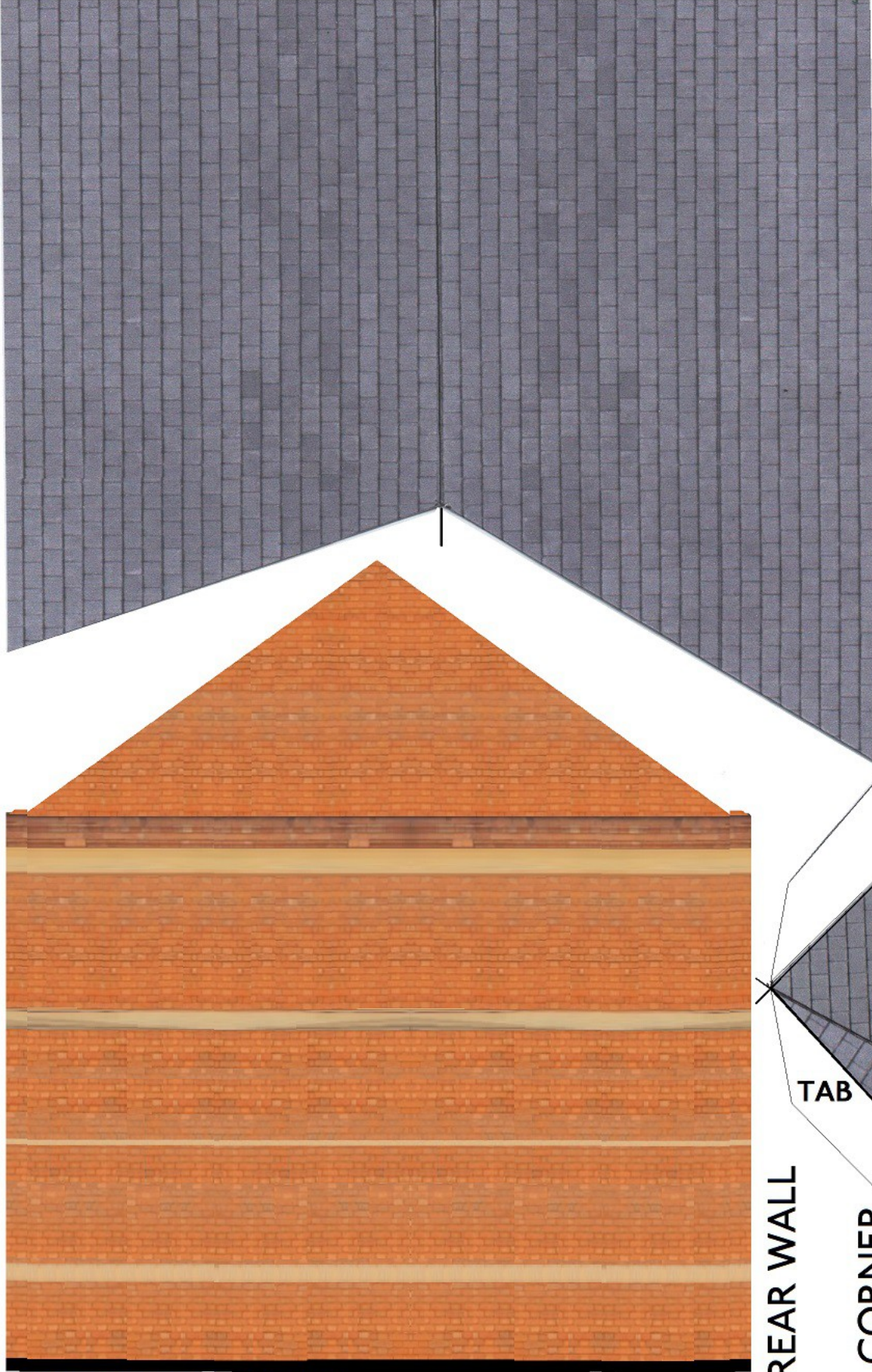


For an enhanced model, the printed windows should be carefully cut out and plastic glazing fitted within. Use the separate window displays and interior wall to complete the model.

ROOF TILE CAPPING

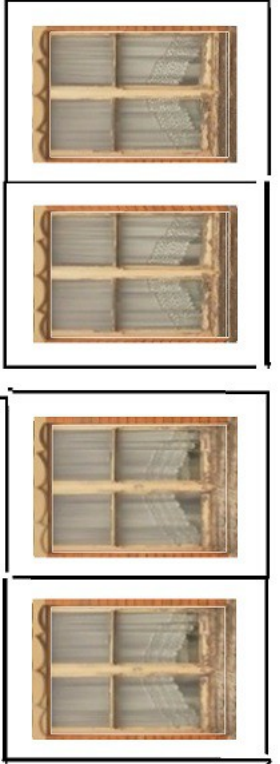


LIZZIES PIE
SHOP thin 2



MAIN ROOF

UPPER WINDOWS



TAB

TAB

REAR WALL

CORNER
ROOF