

LCCF LCC fire station - Instructions

General Instructions. Use a **sharp knife and steel rule** on a cutting mat to cut out parts. Note that as parts are cut out, some will need to be kept safe for later use. **Bostick all purpose** glue is strongly recommended, UHU is an alternative. PVA and other water based glues can distort paper and smudge printing ink. Some parts may require trimming to fit. **Exposed cut card edges can be coloured with felt tip pen or pencil to match the surrounding finish to greatly enhance the overall effect.** A soft 3B black pencil is often sufficient. As pieces are assembled, place them on a true flat surface to ensure that EVERYTHING DRIES SQUARE. A small emery board can be useful for tidying edges especially multiple layers.

The model is broadly based on the station at Millwall, Isle of Dogs, in East London, although two extra bays have been fitted on the left side.

1. Cut out the front wall backing (left) from sheet LCCF 1. Remove the window openings taking especial care with the dormer windows. Colour the cut edges (although the window openings may be left). Cut out the necessary windows from LCCF thin 2, and glue these behind each opening. Also add the personnel door. Cut out the front wall overlay (left) from LCCF 3. Be careful with the lower white strip. Colour the edges to match the brick, or use a soft 3B pencil. Glue this in place over the front wall backing. Note that the overlay will slightly overlap the edge.

2. Repeat the above with the backing and overlay for the right hand side. Note that the overlay (right) will join the two pieces of wall together. Retain the long pieces of brick trim which will later be fitted to the top of the overlays.

3. Turn the wall *face down*. Cut out a set of four doors from LCCF 1 and place over a door opening. Glue a thin door strip from LCCF 2 either side. When dry add a wide strip on top - this arrangement will enable the door sets to be slid out *with care* so that the doors may be shown 'open'. With care the single door leaves may (later) be added to the wide door strips to show the doors in the folded back position.

4. Cut out the end wall from LCCF 3. Remove the round window openings and add the windows behind. Glue 'edge on' to the rear of the front wall. Use two brackets as shown to support the corner. When set, add the overlay which may need cutting to abut the overlapping front overlay. Add the white base trim, and also the brick trim.

5. Repeat with the other end of the building. Add the brick trim to the top of the front wall overlay. Cut to length as required.

6. Cut out the grey roof strips from LCCF 2. Glue these inside the top edge of the walls all around the building using the white joiners as shown in the diagram.

7. Cut out one of the larger chimney stacks from LCCF thin2, leaving the black fold markings attached. Fold as marked before cutting them off. Glue this to the chimney stack projection on the end wall. The stack should sit on top of the grey roof strip. Add two brick chimney bands where marked in the brick work. Add a chimney stack top from LCCF 2. Repeat with the other large stack.

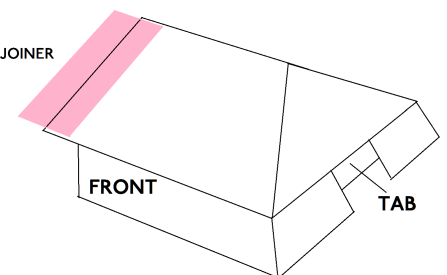
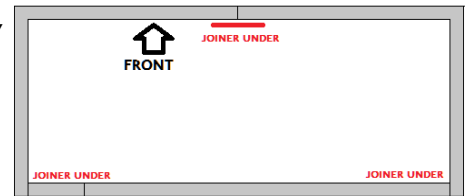
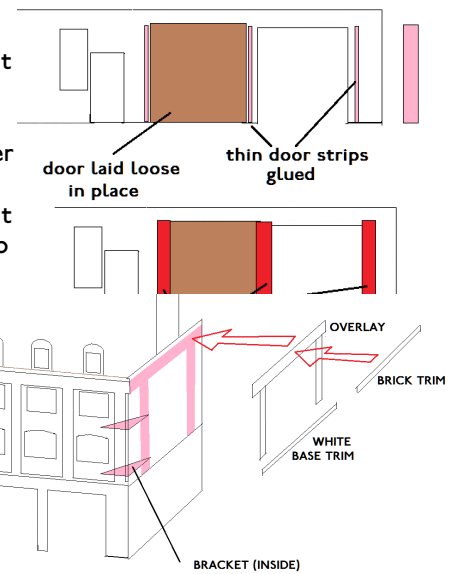
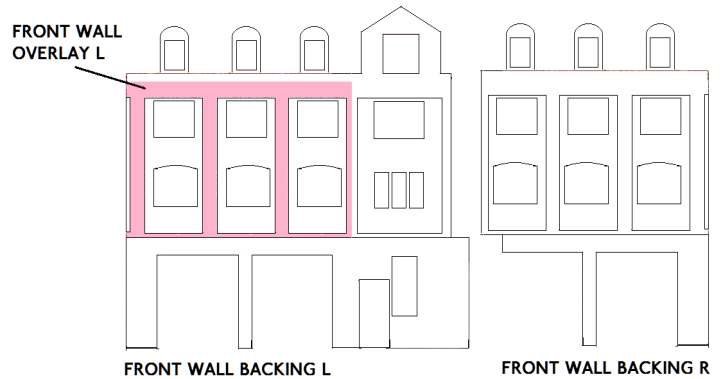
8. Cut out roof (right) and a roof end from LCCF thin 1. Fold and assemble as shown in the diagram. Repeat with the other half of the roof and use the joiner to join together. Also add the front and rear roof stiffener strips from LCCF 1 along the lower edges of the roof on the inside. Test the roof for fit between the chimney stacks, ensuring that the cut out for the dormer window faces to the front. Glue the bottom edges of the roof to the grey strips and the tabs to the chimney stacks. Add roof tile capping along the top & corner roof edges.

9. Add the brick centre dormer sides behind the large dormer window inside the roof cutout and on the grey roof strip. Add the grey triangular dormer window sides between the smaller windows and the roof.

Fold the larger dormer roof and glue in place. Curve the smaller ones before gluing over the smaller windows.

10. Make up the smaller chimney stacks and add tops and banding as before.

Roll the chimney pots tightly and use a small amount of glue to secure the roll. Add to the tops of each chimney stack. Blacken the top edges with a felt pen.



Designed by
J Howe, 15 King's Close, Buxton, Derbyshire, SK17 7NT
April 2015.

See the entire range of kits at www.kingswaymodels.co.uk