

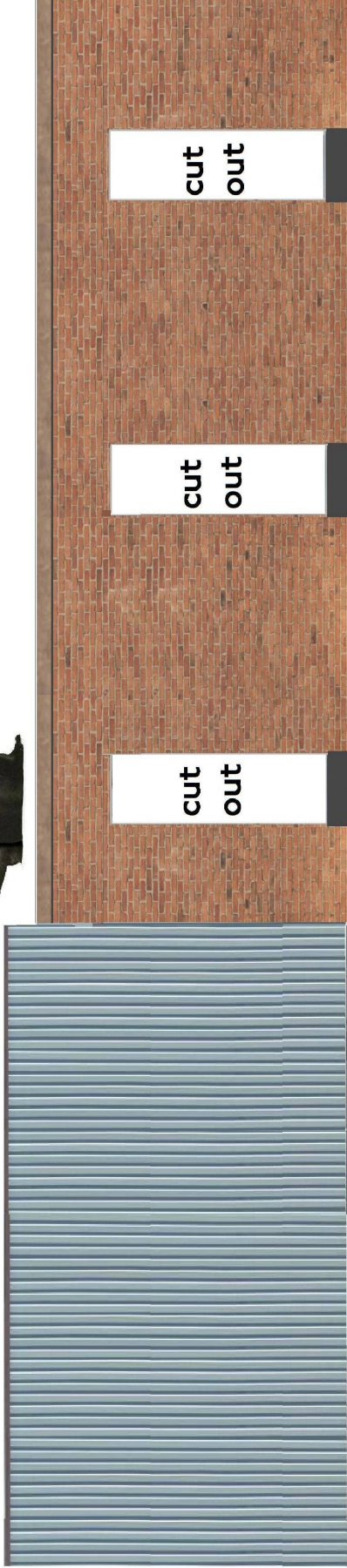


Merry Christmas from

see the range of kits at :

www.kingswaymodels.com

RH side wall



front wall



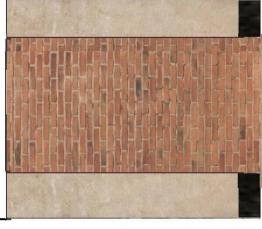
roof



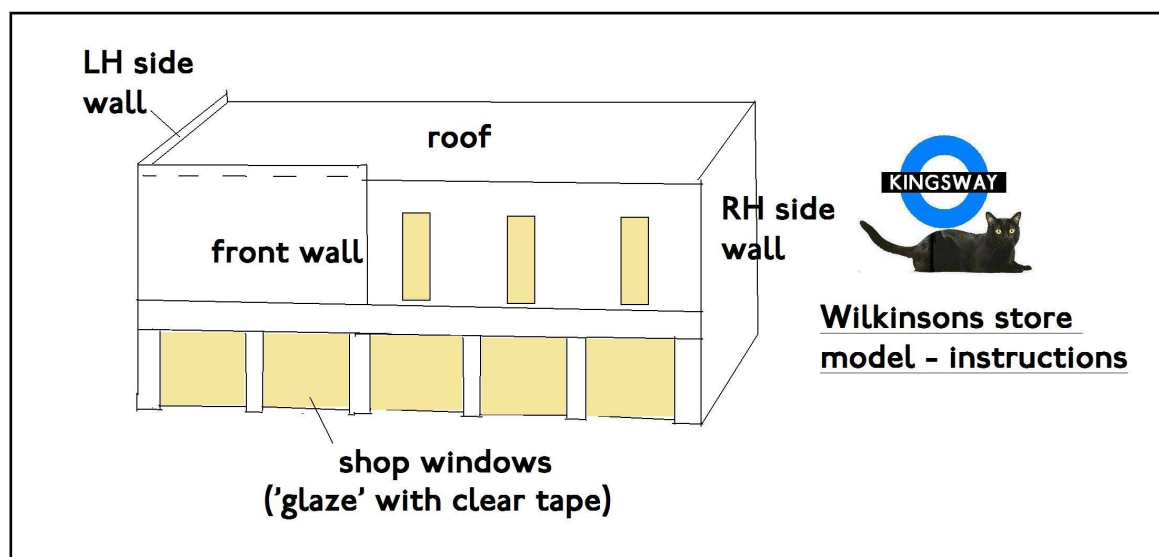
shop windows



LH side wall



Kingsway Models Christmas Download 2012



A 1/76 half relief scale card kit of a typical Wilkinson's high street store.

The building is designed to fit between other buildings in a street scene.

See the Kingsway High Street range at <http://www.kingswaymodels.com/page6.htm> for shops and other buildings that you can place either side.

The range includes street paving which can be added to help create a realistic scene.

Make sure you print the sheet at 100% full size!

You will need to glue the sheet of parts onto stiff card - artist's mounting board would be best, but cornflake box will probably do.

Use Bostick All Purpose glue, a large sized tube of which can be bought at your local Wilkinsons more cheaply than the small size from the newsagent!

1. Cut out the front wall, carefully removing the three upper window openings. Use a soft 3B or 4B pencil to darken the cut edges of the wall, including around the window openings upstairs and down.
2. Cut out the three upper windows and 'Glaze' them with clear tape to make them shine. Glue these behind the openings, being sure to get them the right way up.
3. Cut out the strip of five shop windows. 'Glaze' them and glue behind the lower openings in the front wall.
4. Cut out the LH and RH side walls. Darken the top edges. Glue the walls in place *behind* the front wall at either end. Stand the model on a flat surface whilst the glue sets, to ensure the three walls are all level.
5. Cut out the roof. This will fit *between* the two side walls; and will need trimming to the required size depending upon the thickness of your card. Glue it flush with the top of the RH side wall, which will mean it is slightly below the level of the LH side wall.
6. The model is complete.

See the Kingsway High Street range of models at <http://www.kingswaymodels.com/page6.htm> for shops and other buildings to place either side, and the PAV paving kit to place in front.

Visit <http://kingswaymodels.webs.com/modellingtips.htm> for ideas to improve your models.



A 2012 Christmas Download from www.kingswaymodels.com

MERRY CHRISTMAS & A HAPPY NEW YEAR!